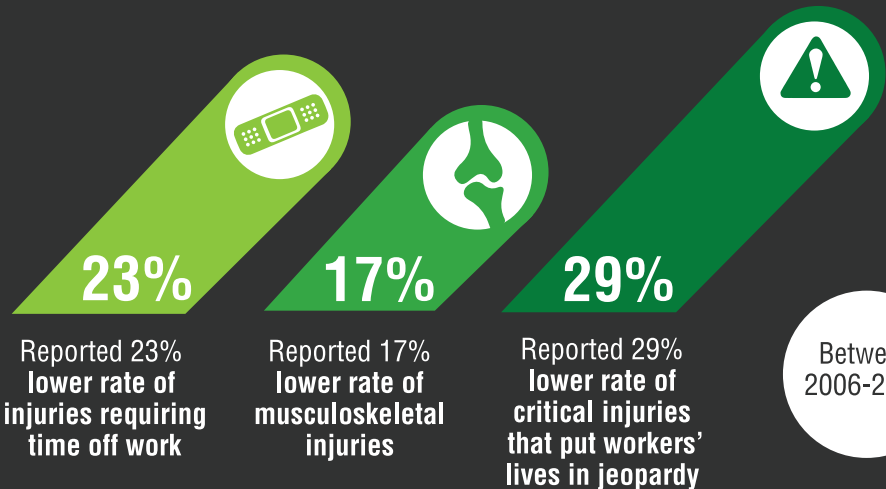


ONTARIO'S **UNIONIZED** ICI CONSTRUCTION INDUSTRY IS

23% SAFER

..... In Comparison to Non-Union Firms



*Source: Institute for Work and Health, "Protecting Construction Worker Health and Safety in Ontario, Canada: Identifying a Union Safety Effect." 2015.

A UNION SAFETY EFFECT EXISTS!

WHY CHOOSE **UNION?** + What Contributes to the Union Safety Effect?



\$40 Million

invested annually in specialized apprenticeship, upgrade and safety training for union tradespeople



95 State-of-the-Art Training Centres

Joint union-employer training centres in every region of the province ensure union tradespeople have the skills required for productive and safe worksites



1.7 Million

man-hours of training per year creates a highly skilled, safety focused workforce

UNIONIZED CONSTRUCTION WORKS.COM

POWERED BY



KNOWLEDGE TO BUILD ON
www.iciconstruction.com

IN PARTNERSHIP WITH



MECHANICAL CONTRACTORS ASSOCIATION
HAMILTON

To learn more about the Union Safety Effect, Go to: UnionizedConstructionWorks.com
FOLLOW UCW ON TWITTER @UCWon EMAIL UCW AT: INFO@UNIONIZEDCONSTRUCTIONWORKS.COM

© Ontario Construction Secretariat

mcahamilton.org

A UNION SAFETY EFFECT EXISTS IN ONTARIO!



What Else Contributes to the Union Safety Effect?



Well-established reporting practices provide the unionized construction industry with a safety advantage



Programs and practices that more effectively identify and reduce construction work hazards



Ongoing skills training programs that provide a foundation for safer skilled work throughout one's career

*Source: Institute for Work and Health, "Protecting Construction Worker Health and Safety in Ontario, Canada: Identifying a Union Safety Effect." 2015.

WHO DID THE RESEARCH?



IWH is an independent, not-for-profit research organization that aims to protect and improve the health of working people. Recognized as one of the top five occupational health and safety research centres in the world, the Institute provides practical and

relevant findings on the prevention of work injury and disability to policy-makers, workers, employers, clinicians, and health, safety and disability management professionals.
www.iwh.on.ca

ABOUT THE RESEARCH

..... Study Parameters



Analysis of **7 Years** of WSIB claims data



from **45,000** construction firms



employing **1.5 million** full-time workers

Methodology & Findings:

Independent Scientific Peer-Reviewed

Read the full report

on the Union Safety Effect at the **Journal of Occupational and Environmental Medicine**



Ontario's **Unionized ICI Construction Industry**
YOUR 1ST CHOICE FOR SAFE WORKSITES!

UNIONIZED CONSTRUCTION WORKS.COM

POWERED BY

OCS
Ontario Construction Secretariat

KNOWLEDGE TO BUILD ON
www.iciconstruction.com

IN PARTNERSHIP WITH



MECHANICAL CONTRACTORS ASSOCIATION

HAMILTON

To learn more about the Union Safety Effect, Go to: UnionizedConstructionWorks.com

FOLLOW UCW ON TWITTER @UCWon

EMAIL UCW AT: INFO@UNIONIZEDCONSTRUCTIONWORKS.COM

© Ontario Construction Secretariat

mcahamilton.org